

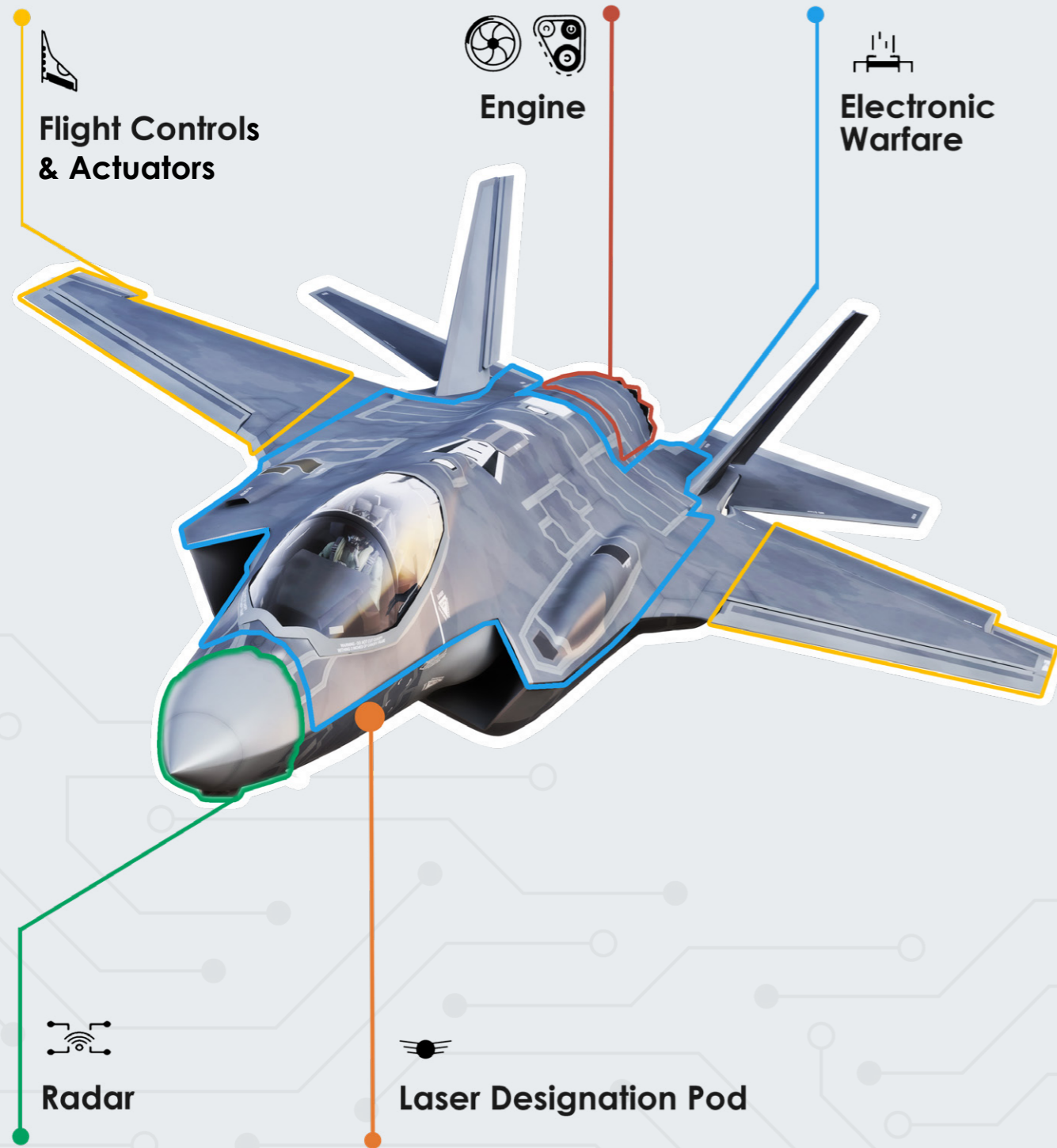


Inside

# FIGHTER AIRCRAFT

Exxelia offers its expertise in **designing and manufacturing High-Reliability products** for all **military aircraft applications**. Recognized for its complete high-reliability passive components product offer (including MIL capacitors, MIL resistors, inductors, transformers and EMI / EMC filters), Exxelia is also a major supplier of position sensors and slip rings for critical systems.

Exxelia offers numerous product series with **MIL certification** perfect for **Military Aircraft such as MIL-PRF-83421/6 film capacitors and DSCC 93026 and 10004 wet tantalum capacitors**. Other embedded products include EMI filters (single or multiways), pulse, high voltage or high capacitance ceramic capacitors or inductors and transformers.



**High stability**  
**Ceramic capacitors LA series**  
 High thermal & voltage stability  
 Capacitance: 1 pF - 1 μH  
 Voltage: 25 V - 63 V  
 - 55°C to +125°C

**High capacitance**  
**Ceramic capacitors R Series**  
 Miniaturization  
 Capacitance: 47 nF - 27 μH  
 Voltage: 50 V - 500 V  
 - 55°C to +125°C

**Non magnetic**  
**Ceramic capacitors CEC/CNC Series**  
 High-Rel capacitors  
 CEC series: Cap. max 470 nF  
 CNC series: Cap. max 12 μF  
 - 55°C to +125°C

**High voltage**  
**Ceramic capacitor TCK Series C48x**  
 Excellent withstanding to charge and discharge  
 Capacitance: 27 pF - 8,2 μF  
 Voltage: 200 V - 5 kV

**High current**  
**Tantalum capacitors CTC21/CTC21E**  
 Very low ESR  
 Capacitance: 5,6 μF - 680 μF  
 Voltage: 6,3 V - 100 V  
 - 55°C to +125°C

**Microwave HiQ**  
**MLCC RF capacitors CH & SH Series**  
 Low ESR - High working voltage up to 1500V  
 Extended operating temperature (+175°C)

**Snap-In**  
**Aluminum electrolytic capacitors Snapsic caps**  
 High energy density  
 Capacitance: 33 μF - 47 000 μF  
 Voltage: 25 V - 500 V

**Prorelic 125**  
**Aluminum electrolytic capacitors**  
 Capacitance: 1 μF - 25 000 μF  
 Voltage: 10 V - 450 V  
 - 55°C to +125°C

**Snapsic 105 LP**  
**Aluminum electrolytic capacitors**  
 Low profile / 4 pins  
 Capacitance: 150 μF - 68 000 μF  
 Voltage: 16 V - 500 V  
 - 55°C to +105°C

**RF inductor**  
**Magnetics MPC1 2000**  
 Excellent Q factor  
 Inductance: 0,01 μH - 1 mH  
 Frequency: 0,79 MHz - 500 MHz  
 - 55°C to +125°C

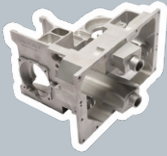
**SESI inductors**  
**6 sizes SMD packages**  
 Increased thermal dissipation  
 Inductance: 1 μH - 470 mH  
 Up to: 1 MHz  
 - 55°C to +125°C

**Transformers & inductors**  
**SMD molded compact inductor**  
 Inductance: 2,69 μH - 151,2 μH  
 Peak current up to: 2,3 A  
 - 55°C to +105°C

Powering Performance

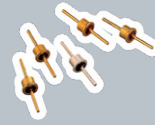
Exxelia is valued for its ability to develop standard and custom products complying with the most demanding qualifications.

Contact us [www.exxelia.com/en/contact](http://www.exxelia.com/en/contact)



### Precision Mechanics

Custom product



### EMI Filters

C-type size 30

Power: 0,05 W

Primary: 173 A

Secondary: 0,23 A

Frequency: 350 - 720 Hz



### Custom film capacitor

Mica capacitor

Low Tolerance up to 1%

Capacitance: 1 000 pF - 10  $\mu$ F

Voltage: 40 V - 400 V

Up to 25 capacitors rolled

into 1 block



### High stability

Film capacitor KM 94 Series

Low Tolerance up to 1%

No piezoelectric effect

Capacitance: 4,7 nF - 1,2  $\mu$ F

Voltage: 40 V - 100 V



### High stability

Film capacitor KM 82 Series

Low Tolerance up to 1%

No Piezoelectric Effect

Capacitance: 1 000 pF - 1  $\mu$ F

Voltage: 40 V



### Linear potentiometer

Position sensors

Electrical travel 10 to 525 mm

- 55°C to +150°C



### Slip-Rings

Customizable

Power and data transmission

Standard interface, hollow shaft

interface, pancake



### DSCC 93026 & 10004

Wet tantalum capacitors

Low ESR

Capacitance: 10 pF - 10 000 pF

Voltage: 10 V - 125 V

- 55°C to +125°C



### M83421 & M39022

MIL film capacitors

Hermetically Sealed

Capacitance: 0,001  $\mu$ F - 12  $\mu$ F

Voltage: 30 V - 1 000 V

- 65°C to +125°C



### EMI-RFI Filters

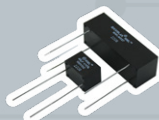
Type-C, T

Solder-in or threaded package

Insertion loss: 4 - 70 dB

Up to: 10 A

- 55°C to +125°C



### High energy density

MML M-series

90% lighter than MLCC

Capacitance: 1,1 $\mu$ F - 300 $\mu$ F

Voltage: 300V - 1000V

-55°C to +140°C



### High energy density

MML D-series

For power management

Highly customizable

Capacitance: 100 $\mu$ F - 2400 $\mu$ F

Voltage: 300V - 1000V

-55°C to +140°C

